

10th Annual January Auction

Table of Contents

Acknowledgements	Page 2
Dates	Page 3
Procedure	Page 4
Lots	Page 5 - 58

10th Annual January Auction

This auction is made possible by:

- Kim Cochran *GMS Curator*
- Tom Faller *Photographer*
- Lori & Charles Carter *Technical Advisors*
- Juergen & Diana Poppelreuter
- Ventura Mineral Society
- And by members like YOU

10th Annual January Auction

January 3 Physical Preview at Clubhouse

3:00 to 6:00 PM

January 4 Auction

7:30 pm

January 5 Notification by e-mail of won items

January 6 & 7 Pick up of items at clubhouse

3:00 pm to 7 pm

- We will use social time from 7:00 pm to 7:30 pm on Jan. 4 to answer Zoom operating questions and practice using the Zoom chat function.
- Payment is due at pick-up. If paying with Paypal, please pay prior to pick up and provide proof at time of pick up.

10th Annual January Auction

- Participants must sign in to Chat, stating name and e-mail address. This is a one time only entry.
- Lot numbers will be introduced in Chat and verbally.
- Bid in Chat is dollar amount only, e.g. \$5 or just 5
- No partial \$ amounts are accepted, e.g. 5 is good, but not 5.50
- At start of auction participants will be muted. NO verbal bids will be accepted
- Un-mute only if clarification on item or last bid is needed.
- Only bids in Chat, no comments except oops if you make a bid typo
- Auctioneer will solicit bids.
- Auctioneer will verbally advise when item is sold and to whom.
- Sale will be confirmed in chat.
- Chat record will be saved
- At conclusion of auction, total \$ amount raised for the club will be announced.
- Individual bidding summaries will be sent by e-mail to the address you gave in the beginning.
- ***Remember, this is a fundraiser, bid vigorously!***



Whiskey Barrel Half

Jack Daniels Distillery. 3 metal bands, oak staves, interior charred. 5 holes drilled into bottom for drainage.



Agatized Withlacoochee Corals

(7) Seven pieces, fist size. 2 with druzey, others with botryoidal formations.
LOCATION: Clyatteville, Georgia.



Soapstone Jar with Lid

Brown, satin polish. Approx. 2.5 inch diameter x 4 inches tall.



Petrified Wood

(3) Three pieces, AZ and other location. A) log with desert patina, nice agatizing.
B) Log piece with knots, end cut. C) about a 1/3 section of a log.



Cat's Eye Quartz

LOCATION: Brazil. Mixed sizes, (22) Twenty-two pieces. Lapidary material.



Muscovite Mica

LOCATION: North Carolina. Display specimen approx. 6"x6"x5"



Emerald in matrix

LOCATION: Bahia, Brazil. Display specimen approx. 4 inches x 3 inches. Matrix of Quartz and Biotite.



Barite

LOCATION: Glass Cut Mine, Cartersville, GA. Location Specimen, approx. 6 inches.
Small crystal pocket on one end approx. 2 inches.



Tumbled Agate

Mix of Agate types and sizes. Flat cuts and rounded. May be suitable for wire wrapping.



Prehnite

Botryoidal Specimen, Sea green color, numbered on bottom. LOCATION: New Jersey.



Whale Bone Fossils

LOCATION: Cooper River, Charleston, South Carolina. Large Vertebrae and assorted fragments.



Driftwood Stands

(5) Five satin polish driftwood stands for gem tree bases or specimens.



Labradorite

LOCATION: Wyoming. Historic/old labels, (5) five pieces showing little labradorescence; these are location type specimens.



Polished Eggs

(3) Three Small eggs with acrylic stands. A) rutilated quartz, b) Porphyry, c) Agate with Jasper.



Coral

(5) Five pieces, four species. Bleached modern specimens



Phlogopite Mica

LOCATION: Templeton, Canada. (2) Two pieces, each in a box. Historic specimens with old labels. Fragile and fragmenting.



Tumbled Stones

Rounded mix of quartz, jaspers, agates, petrified wood, obsidian, tiger eye, and more. (does not include bowl).

18

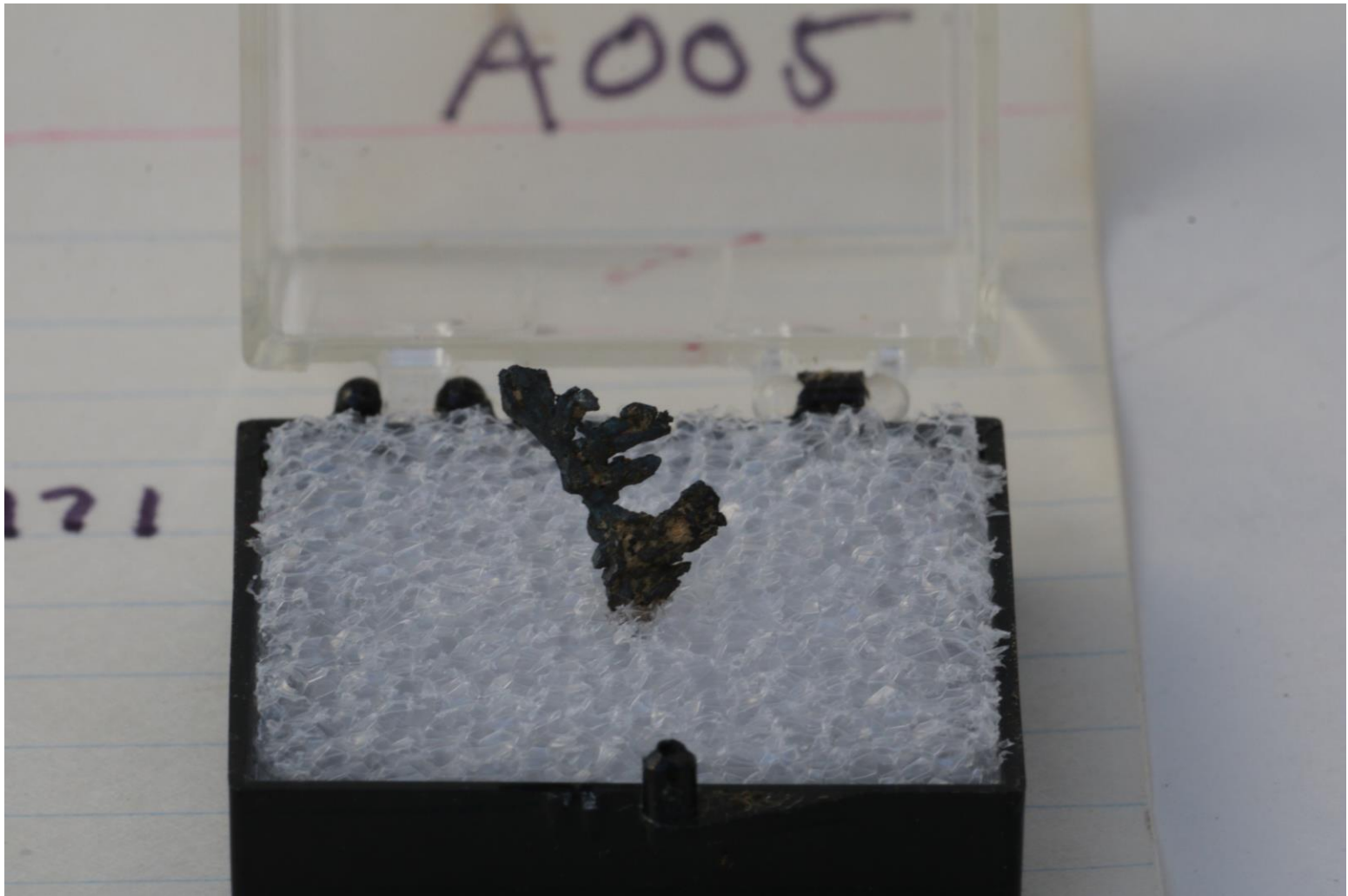
SILVER
ALAMOS
SONORA
MEXICO
TRADE V. MEADOR 1971
VALUE
Ag

A005



Silver Crystal

LOCATION: Alamos, Sonora, Mexico. Just under 1 cm. Collection index card "traded 1971". In small clear box. (Picture 1 of 2)



Silver Crystal Close-up

18 Picture 2 of 2



Quartz Crystal

(2) Two Amethyst and (1) Clear Quartz, small specimens or gem tree bases.



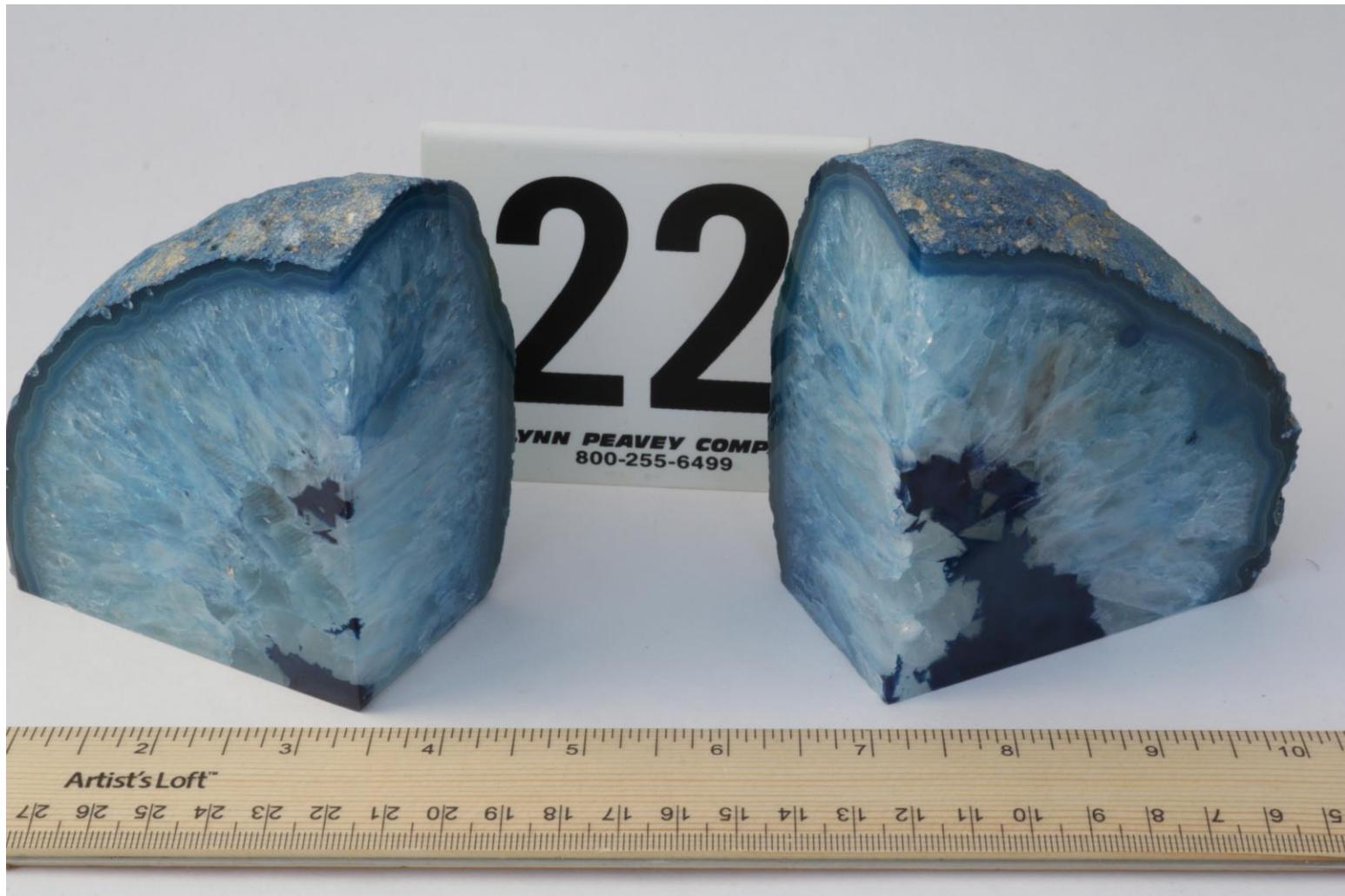
Cristobalite in Black Obsidian

LOCATION: Lava beds, New Mexico/California. Specimen with Collection index card, "2000". Very Sharp!



Lapidary Mix

Assorted slabs and chunks of Agates, Jaspers, Oolites, Brecciated, etc.



Agate Quartz Bookends, Blue

LOCATION: Brazil. Blue dyed and polished.



Lepidolite Mica

LOCATION: New Mexico. Specimen has suggestions of yellow-pink in greenish stone.

24



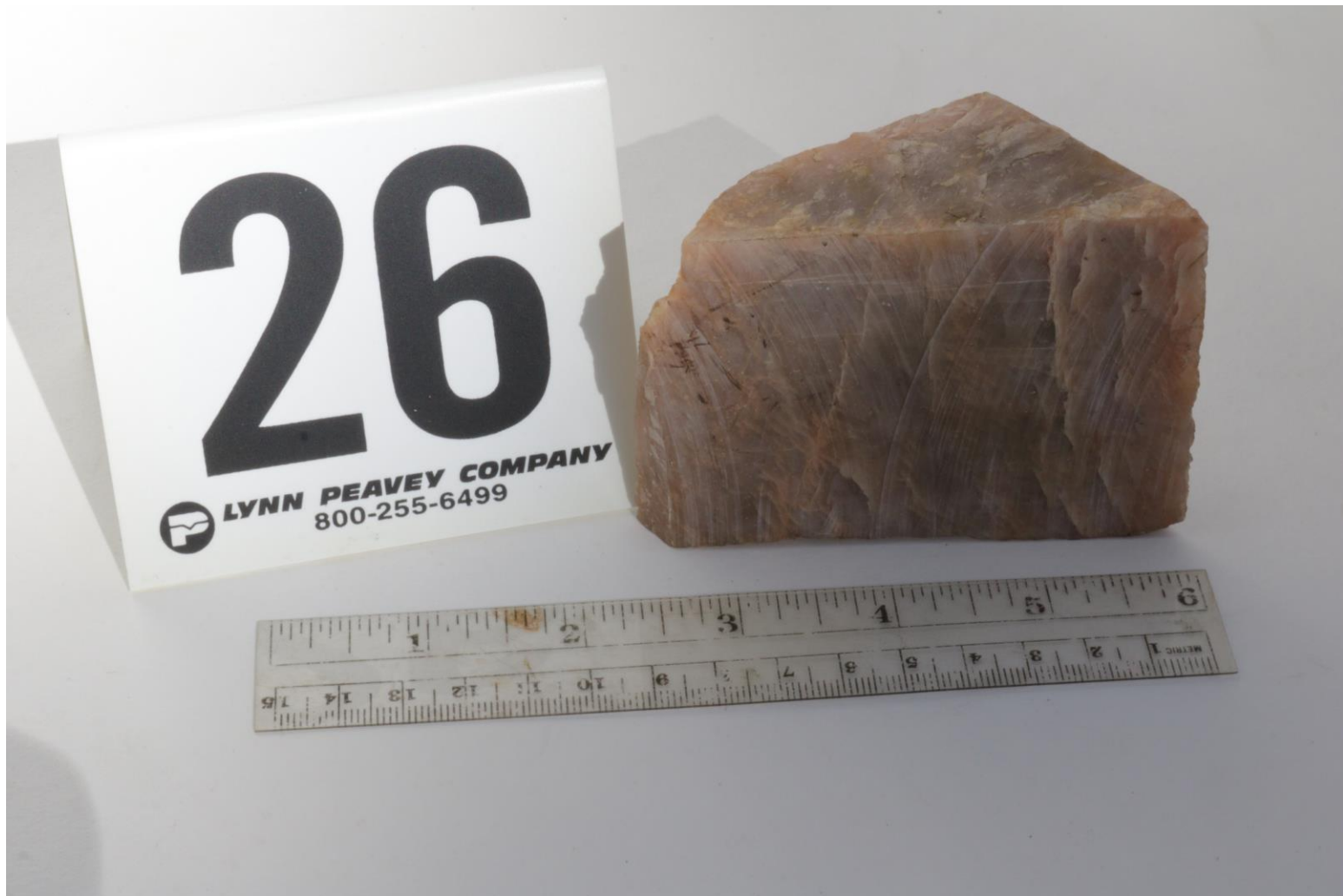
Lapidary Slabs

Mixed materials



Green Jade

(2) Two discs, approx. 2 inches x 1 cm thick, and (3) three fragments.



Sunstone

LOCATION: Ontario. Unusual location specimen. Some flash in the feldspar, good cleavage.



Petrified Wood

(1) One cross section slice, high polish.



Jade Rings

(5) Five wire-wrapped in square, gold-colored wire. Sizes 8 to 11.5



Chromite

LOCATION: Louise, Georgia. Site was prospected in the 1930's. Chromium Ore specimen. Marked on bottom "Chromite (Page Blakemore)".



Thunder Eggs

(3) Three face polished halves. One is New Mexico material.



Granodiorite

LOCATION: Mt. Rainier, Washington. Location specimen. Repeat auction donation.



Peridot Rough

LOCATION: San Carlos Reservation, Arizona. Bag of loose material.



Miniature Malachite Clock

Mfr. Hong Kong. Approximately 1.5 inches x 2 inches. Battery powered.



Coral Pendant

Orange/Pink coral in gold toned setting. 8x6 mm stone. With Chain.



35 Petrified Wood

LOCATION: Arizona. Rainbow petrified wood log section, approx. 2 ft tall x 1 ft wide

Minimum bid \$ 100



Copper

Poured copper specimen. Approx. 8 inches x 4.5 inches.



Agates & Chalcedony

(2) two pieces Agate and (2) two pieces Chalcedony. Specimen or Lapidary material.



Agatized Withlacoochee Corals

(5) Five pieces. Includes blue plastic "Pace" milk crate.



Agate/Jasper Slab

One thick slab with many colors



Oligoclase

LOCATION: Mitchell County, North Carolina. Vintage old label and writing on specimen. Approx. 4 inch chunk.



Trilobites in Shale

LOCATION: Floyd County, Georgia. Approximately (20) twenty pieces. Wrapped in 1992 newspaper and comics. Photo shows samples.



Crazy Lace Agate

LOCATION: Chihuahua, Mexico. Thick slice, one side polished, approx. 5.5 inches x 3.5 inches. Specimen or Lapidary.



Blue Slag

LOCATION: Historic Cumberland Furnace. Shoebox of blues and blue-greys.



Petrified Wood

LOCATION: NW USA. Approx 3 inches, thick polish slice showing nice grain.



Carved Parrot

Manganocalcite on Pyrite, mfr Peru.



Treasure Box

Flat of assorted everything. Geodes, thunder eggs, slabs, crystals, and more.



Craft Wire

Assortment of spooled craft wire



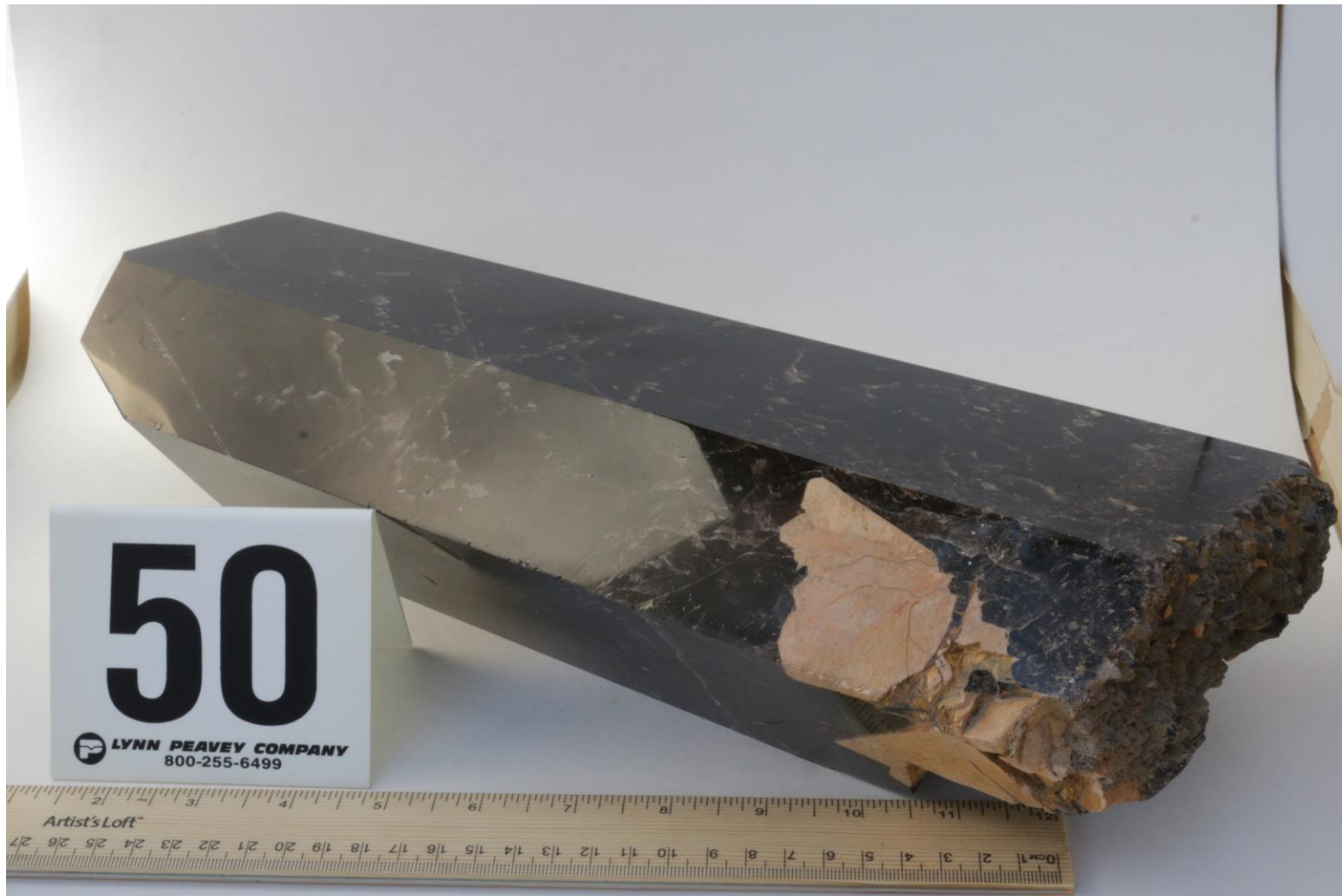
Talc

LOCATION: Georgia. Specimens or carving chunks.



Earrings

(10) Ten pair tiger eye 5mm rounds. On cards.



Smoky Quartz

LOCATION: Brazil. Major display piece. Cut and polished, with natural crystal and feldspar at base.

Minimum bid \$150



Magnifying Display Discs

(29) Twenty nine Glass magnifying display discs/domes, approx. 4 inches x 1 inch thick.



Amethyst Cathedral

LOCATION: Brazil. Pale, more lilac than purple. Approx. 10 inches high x 5 inches wide, flat bottom stands stable.

Minimum bid \$30



Micro Mount Mix

(18) Eighteen colorful micromounts and many empty, but labelled, boxes. Some specimens without labels, that may be in the other boxes.

*This concludes the Georgia Mineral
Society's 10th Annual January Fundraiser
Auction*

Thank YOU

*Please send comments and any
feedback to*

*programs@gamineral.org, so that we
may continue to improve using this
new technology.*